

FEMALES OF -MERIT

VOLUME 7



December **15** 2024

1 PM | AT THE FARM RADVILLE, SK

Welcome

from **MERIT CATTLE CO.**



2024 marks our 40th anniversary in the Angus seedstock business. This incredible journey has been our passion, fueling us through the exciting highs and tumultuous lows. Perhaps the greatest gift has been raising our family in the business alongside people we revere.

The "Merit" cow is what makes our world go round, she has to be sound, sturdy and productive. Fads and trends in the livestock industry come and go but some things will always stay the same, foot quality, udder design and maternal longevity are at the forefront of our program. Females that have the volume and capacity to raise bulls that will go and sire stout calves for our commercial producer while still having the visual appeal of elegance and balance because life is too short to work with ugly cows.

The bred heifer offering this year is stacked! We put an emphasis on offering our best every year and we are proud to highlight this offering with a group of Merit Incredible 1020 daughters that are as powerful as you will find in this country. Many of these heifers trace to some of our most prolific donor cows and cow families

including the Socialites, Floras and Blacklass's. Study the book and notice our confidence in these matings adding as many premium cows to each pedigree as we can.

Our open heifer offering, while limited in numbers, is loaded with quality in pedigree and in phenotype. The potential for these girls is endless. They have been developed gently to continue to grow and mature at a natural pace so they will peak in the future for you. All 6 of these little ladies have proven donor cows front and centre in their pedigrees, whether you are hoping to make an addition to your replacement pen or hang a halter on one and hit the road, we are certain they will perform.

We are extremely proud of the -M- influence in the Canadian Angus industry. To all our customers, thank you for your confidence in our program, we value your business and friendship. To all the family, friends & folks who helped us along the way, from the bottom of our hearts, thank you.

Trent, Janelle, Macy, Garrett & Carson Liebreich.



GRASSROOTS - FAMILY - PASSION - PROGRAM



Sale **INFORMATION**

SALE DAY CONTACTS

Trent Liebreich	306-869-7207
Garrett Liebreich	306-815-7078
Janelle Liebreich	306-869-6993

AUCTIONEER

Ryan Dorran	403-507-6483
-------------	--------------

CASTLEROCK MARKETING

Shane Castle	306-741-7485
Mark Forsyth	306-784-7844
Chad Lorenz	403-896-9585

BOHRSON MARKETING

Nate Marin	306-869-7130
Jaxon Payne	306-830-0456
Scott Borhson	403-370-3010

OBI LIVESTOCK LTD.

Mark Holowaychuk	403-896-4990
Roger Peters	403-828-9815

DIRECTIONS

From junction of HWY #28 & #13 West of Weyburn
16km south, 3km West on Township road 64
1km south on Range Road 182

ONLINE

Online Bidding with DLMS.ca 
Sarah Hasson 306-681-5340

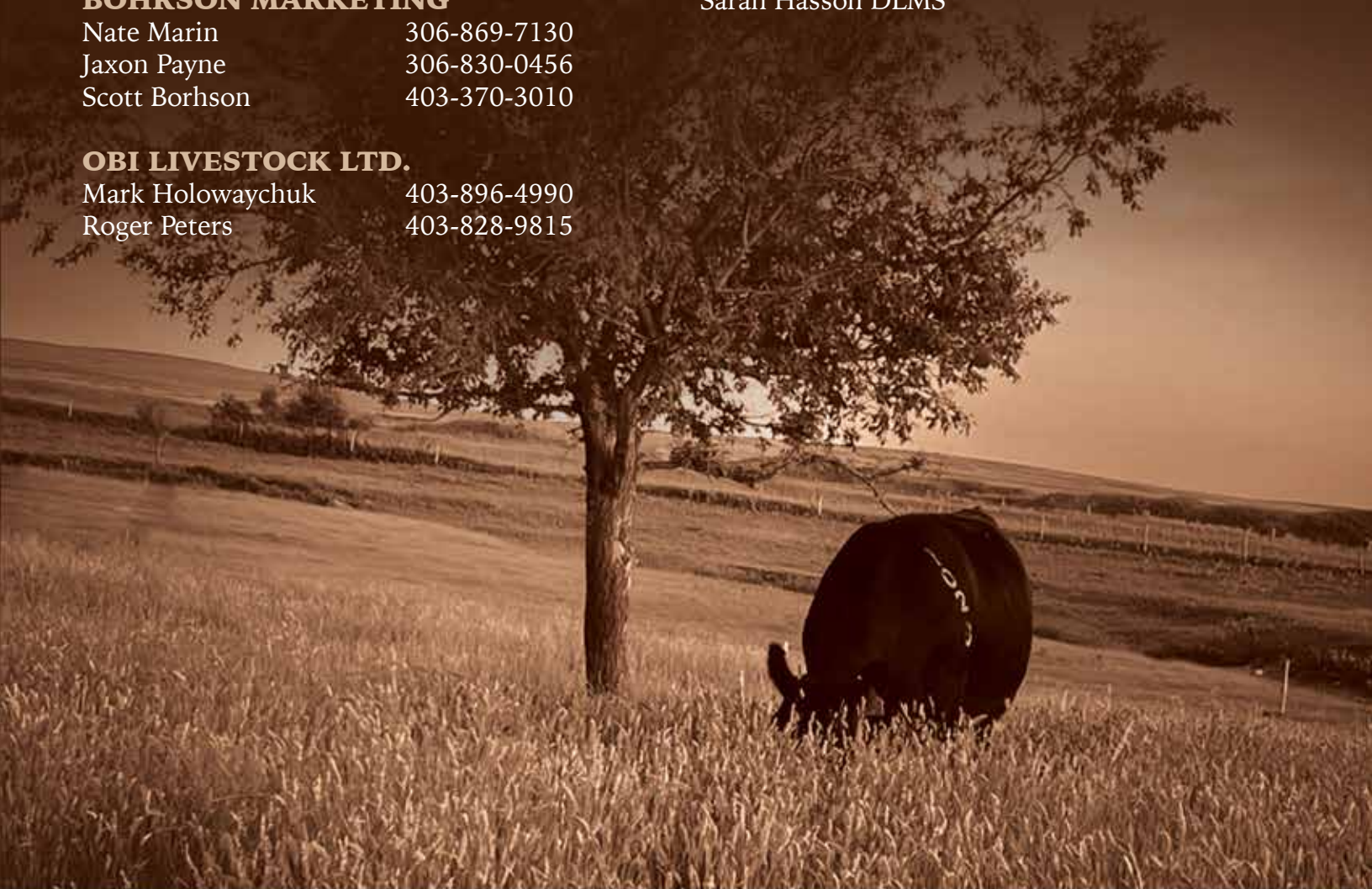
CATALOGUE

Compass Creative



VIDEOS

Sarah Hasson DLMS



WELCOME

from **BOHRSON MARKETING SERVICES**

The Females of Merit – Volume 7 is stacked up once again with a great offering from the heart of their herd. The Merit program is recognized as one of the top Angus herds in Canada with a set of production cows that flat out produce in both the show and sale ring. This multi-purpose program has accumulated a tonne of banners over the years but most importantly, their stock have gone on and done great things for their customers and produced extremely well.

Quality over quantity is the approach with this sale as this set of females and genetics is to showcase the strength of the Merit brand. The females on offer are the cream of the crop and are selected from the heart of their program which emphasizes the strength of the momma cow. Past sale females have gone on and done strong things for their customers and this offering will be much the same. The Merit program annually offers the best females which in turn transitions to showing what type of strong females you can attain when utilizing their genetics whether it be through this sale or their bull sale on the last Monday of March annually.

We encourage you to join us to take in a strong sale from good people that stand behind their product. They live, eat and breath cattle and go the extra mile to build an outstanding angus program for you to reap the benefits by attaining their genetics through their sales. Jax and Nate will be on hand sale day and we encourage you to contact them or any of the staff if you can't attend. We do hope you join us as it'll be worth your trip to take it in with a great lineup for the The Females of Merit – Volume 7!

*Best regards,
The Bohrsen Marketing Team*

from **CASTLEROCK MARKETING**

Welcome to Volume 7 of the Females of Merit and as expected it's a power packed offering of genetics stemming from a concentration of breeding efforts woven in a well thought out manner! The cow herd is much like that of a team. With the cow herd being developed and honed continuously and rigorously over four decades success can be attributed to staying the course. The principles that are the foundation at Merit Cattle Co have brought the herd to where it is today. You will notice that many of the sires raised at Merit will regularly be implemented back into the herd furthering the benefits of adding a cow family back in through sire side. Each piece of the puzzle added back in comes with a specific plan in raising the bar. Through the world of ET we are able to further add onto a cow family through numerous daughters and sons along the way. Many of the cow family's that are prevalent have been at Merit from the early days and continue to prove their worth.

Mother Nature did not bless the Radville area with much for moisture this summer making the grass less than ideal. Dry years are not uncommon and the Merit cow herd has stood the test of time in allowing the the productive / fertile cows to only strengthen the genetics by meeting the targets that come from good stockmanship. The cattle as always will be presented in a practical condition setting these females up for success and proper adjustment going to their new homes.

We encourage you to reach out to any of us at Castlerock if we can be of any assistance in regards to the sale offering. Working closely with Merit Cattle Co over a number of years has us very familiar with the program!

*See you sale day!
Shane Castle*





WHAT WE EXPECT

from our females

- Sound structure, starting from the ground up.
- Fertility
- Calve unassisted
- Be maternally minded, but have a good disposition
- Have a good udder that will remain sound for a long productive life.
- Wean a quality calf; one that makes the replacement female pen or a bull with the performance and soundness that our commercial customers demand. **THAT'S WHAT WE ARE ALL ABOUT**
- We only use EPD's and performance records as tools. Stockmanship does **NOT** require a computer!
- They've got to look good, life's too short to look at ugly cattle.
- Easy fleshing with the capacity and ability to rustle for forage.
- Be productive on grass and hay, these are the only resources we have. High input females are self eliminating.
- They're not perfect and don't always work out. That's just the nature of the business. We don't make fantastical claims.
- We are always striving to make them better and more efficient. We love nothing more to see our customers success both commercially and as seedstock.
- Constantly studying and analyzing our cattle bring us joy and satisfaction.





-M- **LOT 1**

MERIT BLACKLASS 3016L

TJL 3016L - 2330032 - JANUARY 26 2023

BW -0.6

WW +62

YW +110

Milk +36

SIRE

KR INCREDIBLE 8149
MERIT INCREDIBLE 1020J
 MERIT FLORA 6078D

DAM

MERIT STONEY CREEK 4023
MERIT BLACKLASS 6060D
 MERIT BLACKLASS 1184

PANTHER CR INCREDIBLE 6704
 KR PRIDE 4031
 BAR S RANGE BOSS 4002
 MERIT FLORA 4120
 HF PROWLER 43U
 MERIT PRIDE 2010
 BEVERLY HILLS VISA 734
 MERIT BLACKLASS 5195

Blacklass 3016 is the epitome of what our breeding program is about, power cattle with attractive features and a pedigree stacked with elite cows. Combining 2 of our most prolific donors, Blacklass 6060 and Flora 6078, Blacklass 3016 is a genetic gem with all the bells and whistles while packing a progressive data package. She's flush sister to our 2023 High selling bull, Merit Admiral 3023, to the keen stockmen at 66 Ranch. Maternal brothers have been highly sought after each spring. McLaren, Kingpin, Sheriff and Admiral have topped our bull sales. Destined for the donor pen and bred early to Magnum. Get in on this girl!

Breeding Bred April 26th SAV Magnum 1335 favourable,
 Due Feb 2nd. Exposed Cowtrax Milwaukee 153L May 28th
 - July 15th



Sire
 Merit Incredible 1020



Maternal Brother
 Merit Sheriff 2040



Maternal Brother
 Merit Kingpin 32H



Service Sire
 SAV Magnum 1335



3034 High quality, heifer from the heart of our replacement pen, Flora 3034 is a striking featured, elegant donor cow prospect. Sporting a fresh and exciting pedigree with the proven predictability of Coalition and Flora 6078 this fancy sweetheart is as skeletally correct as you could draw one. Beautiful skulled, extended and fresh necked, broody and stout. Bred early to the HF Reverence bull that is sparking up some serious hype at Cowtrax. We like this one a lot.

Breeding April 27th HF Reverence 23K, favourable, Due Feb 3rd. Exposed Styles Ambassador D004 May 28th – July 15th

3037 As big barrelled and stout featured as they come, Flora 3037 is packing big time growth numbers along with being sound and correct. Unique breeding piece that is laying down that tidy kind of udder that is synonymous with the Flora family. Really exciting when you look her up on your phone and even more impressive when you see her in the pen. Unique breeding to Cool 3028, set to be a thrilling mating.

Breeding May 16th Merit Cool 3028L, favourable, Due Feb 22nd. Exposed Styles Ambassador D004 May 28th – July 15th



Sire of 3034 & 3037
KR Mojo 8520



Dam of 3034 & 3037
Merit Flora 1032J



Full Brother to 3034 & 3037
Merit Action 3011L



Full Brother to Dam
Merit Investment 1054

-M- LOT 2 MERIT FLORA 3034L

TJL 3034L - 2329949 - JANUARY 31 2023

BW +0.8 WW +62 YW +109 Milk +24

-M- LOT 3 MERIT FLORA 3037L

TJL 3037L - 2329930 - FEBRUARY 01 2023

BW +4.3 WW +82 YW +144 Milk +24

SIRE
PANTHER CR INCREDIBLE 6704
KR MOJO 8520
KR PRINCESS 6394

DAM
U-2 COALITION 206C
MERIT FLORA 1032J
MERIT FLORA 6078D

MUSGRAVE INVISION
PANTHER CR JH BLACKBIRD 409
KRAMERS APOLLO 317
KR PRINCESS 4386
HF SYNDICATE 213Z
U2 ERELITE 109Z
BAR S RANGE BOSS 4002
MERIT FLORA 4120



3044

Classy Incredible 1020 daughter that is well balanced and dense in her build. We purchased her dam from the proven Young Dale herd as a yearling and she did a bang up job on her first calf. The 1020's are currently sparking excitement at Murray Ranches and 66 Ranch. Sons were highly sought after this past spring here and at 66. Her breeding to the Styles Ambassador bull surely will calve easy and compliment her kind.

Breeding Exposed Styles Ambassador D004 May 28th – July 15th. Due approximately March 26.



Service Sire

-M- MERIT PRIM LASSIE 3044L LOT 4 TJL 3044L - 2319573 - FEBRUARY 02 2023

BW +1.1 WW +63 YW +111 Milk +27

SIRE
KR INCREDIBLE 8149
MERIT INCREDIBLE 1020J
MERIT FLORA 6078D

DAM
YOUNG DALE DEFIANCE 199F
ZENDELLE PRIM LASSIE 58J
YOUNG DALE PRIM LASSIE 106D

PANTHER CR INCREDIBLE 6704
KR PRIDE 4031
BAR S RANGE BOSS 4002
MERIT FLORA 4120
YOUNG DALE HI DEFINITION 185B
YOUNG DALE GRACE 126Z
YOUNG DALE TEDDY BEAR 92R
YOUNG DALE PRIM LASSIE 148B

-M- MERIT SOCIALITE 3052L LOT 5 TJL 3052L - 2320680 - FEBRUARY 05 2023

BW +0.7 WW +59 YW +93 Milk +19

SIRE
VERMILION RERIDE F116
BELVIN MAY CITY 0136
BELVIN GEORGINA 121'17

DAM
BAR S RANGE BOSS 4002
MERIT SOCIALITE 1076J
MERIT SOCIALITE 3131

VERMILION RE-RIDE
VERMILION LUCY 5087
HF SYNDICATE 65B
BELVIN GEORGINA 45'15
BAR S RANGE BOSS 1118
BAR S PRIDE 0073
BEVERLY HILLS VISA 734
MERIT SOCIALITE 8795



3052

Good looking Socialite that's smooth in her lines and stout in her bonework, while giving a real maternal look off the side. Just like all productive cows, she's built right from the ground up sound and square on her foot, smooth in her joints and has a ton of capacity. These May City's are shaping up to be exciting young females! Granddam Socialite 3131 is still producing at 11 years of age and consistently puts calves at the front of the pen. Carrying a early service to the Synergy bull that's backed by breed legend HF Syndicate and the Flora cow family.

Breeding Merit Synergy 3066 April 27th, favourable due Feb 3rd. Exposed Styles Ambassador D004 May 28th – July 15th



Service Sire



Sire



3055

Blast from the past on this pedigree here! Right time females have been held in high regard for decades and here is an opportunity to grab one that has the added punch and predictability of Jilt 7091, having 33 direct progeny and many herdsires and high producing daughters for the BJ's Cattle. Again bred early to the Synergy bull who's sure to sire smooth made stretchy cattle.

Breeding Merit Synergy 3066 April 26th, favourable due Feb 2nd. Exposed Styles Ambassador D004 May 28th – July 15th



dam of Bj's Right Time

-M- **MERIT COUNTESS 3055L**
LOT 6 TJL 3055L - 2319577 - FEBRUARY 06 2023

BW **+2.4** WW **+37** YW **+66** Milk **+16**

SIRE
LEACHMAN RIGHT TIME
BJ'S RIGHT TIME 831
MERIT JILT 7091

DAM
MERIT STING 7047E
MERIT COUNTESS 9082G
MERIT COUNTESS 5104C

N BAR EMULATION EXT
LEACHMAN ERICA 0025
DWAJO DUTCH 65P
MERIT JILT 4233
BAR S RANGE BOSS 4002
MERIT SOCIALITE 5121C
MERIT 77X
MERIT COUNTESS 6226

-M- **MERIT SOCIALITE 3063L**
LOT 7 TJL 3063L - 2319581 - FEBRUARY 09 2023

BW **-0.7** WW **+60** YW **+103** Milk **+31**

SIRE
KR INCREDIBLE 8149
MERIT INCREDIBLE 1020J
MERIT FLORA 6078D

DAM
BAR S RANGE BOSS 4002
MERIT SOCIALITE 101H
MERIT SOCIALITE 8011F

PANTHER CR INCREDIBLE 6704
KR PRIDE 4031
BAR S RANGE BOSS 4002
MERIT FLORA 4120
BAR S RANGE BOSS 1118
BAR S PRIDE 0073
NORTHERN VIEW SMW GUSTOV 3Z
MERIT SOCIALITE 48X



3063

POWER COW! Broody, big footed and sound built Incredible 1020 daughter that has all the pieces to be the front pasture kind. Stacking Range Boss in her pedigree twice, she will surely drop an ideal udder and mature into a productive matron. We have implemented linebreeding in our cowherd to increase predictability and we believe it has added a new dimension of consistency that is unparalleled. Breeding to Ambassador will compliment her design.

Breeding Exposed Styles Ambassador D004 May 28th – July 15th. Due approximately April 15th

Thank you
TO WILL VAN GEND
Thanks for all you do!
We're so grateful for your visit mate!



-MERIT



3075 One pretty sweetheart that glides across the pen with a ladylike class that grabs the attention of all visitors to the ranch. Lady Ann 3075 blends sleek lines with substance and shape while packing a progressive genetic set of epds. The kind of heifer we strive to generate with every mating. Bred early to Ambassador, a sire we lost shortly after breeding season, her calf will be a valuable coupon.

Breeding Styles Ambassador D004 April 26th, favourable due Feb 2nd. Exposed Styles Ambassador D004 May 28th – July 15th



Service Sire

-M- MERIT LADY ANN 3075L **LOT 8** TJL 3075L - 2319719 - FEBRUARY 12 2023

BW **+3.7** WW **+56** YW **+103** Milk **+29**

SIRE
KR INCREDIBLE 8149
MERIT INCREDIBLE 1020J
MERIT FLORA 6078D

DAM
MERIT 77X
MERIT LADY ANN 6079D
MERIT LADY ANN 7158

PANTHER CR INCREDIBLE 6704
KR PRIDE 4031
BAR S RANGE BOSS 4002
MERIT FLORA 4120
GDAR INSIGHT 7201
MERIT SOCIALITE 5084
DWAJO DUTCH 65P
MERIT LADY ANN 3229

-M- MERIT MIA 3078L **LOT 9** TJL 3078L - 2319721 - FEBRUARY 14 2023

BW **+5.2** WW **+59** YW **+102** Milk **+30**

SIRE
PEAK DOT FOR SURE 385F
PEAK DOT FOR SURE 3113J
PEAK DOT LADY 3027E

DAM
VISION UNANIMOUS 1418
PEAK DOT MIA 996D
PEAK DOT MIA 911B

PEAK DOT FOR SURE
PEAK DOT LADY 674A
PEAK DOT ELIMINATOR 77C
LADY OF PEAK DOT 466N
VISIONTOPLINE ROYAL STOCKMAN
VISION EDELLA 665
S A V 004 PREDOMINANT 4438
MIA OF PEAK DOT 534R



3078 Sound built, big bodied cow that is the kind that the industry relies on. Low maintenance, stout and square while being comfortable on the go. These For Sure daughters appear to be laying down pretty udders that'll hold up no matter the environment. Again, bred to Ambassador, look for style, quality design and balance out of these matings.

Breeding Styles Ambassador D004 May 28th – July 15th. Due approximately April 10th.

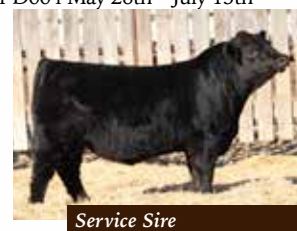


3082

Power in the blood here, Granddam

Countess 8114 has consistently cranked out calves that make it to the front of the pens including past sale feature Merit Intentional 2047K that has stamped a great set of calves at 66 Ranch, Dam Countess 23H is model cow on the ranch with a perfect udder. Love the stretch, substance and wheels on this girl. Her breeding potential is unlimited. Her service is to a highlight of our 2024 bull sale, Front-Runner, who sold to Bear Creek in a hotly contested battle with a number of very good stockmen.

Breeding Merit Front-Runner May 18th, favourable due February 24th. Exposed Styles Ambassador D004 May 28th – July 15th



-M- MERIT COUNTESS 3082L LOT 10 CRSN 3082L - 2320095 - FEBRUARY 16 2023

BW +1.3

WW +63

YW +109

Milk +31

SIRE
KR INCREDIBLE 8149
MERIT INCREDIBLE 1020J
MERIT FLORA 6078D

DAM
BAR S RANGE BOSS 4002
MERIT COUNTESS 23H
MERIT COUNTESS 8114F

PANTHER CR INCREDIBLE 6704
KR PRIDE 4031
BAR S RANGE BOSS 4002
MERIT FLORA 4120
BAR S RANGE BOSS 1118
BAR S PRIDE 0073
HF UNIT 14C
MERIT COUNTESS 6087

-M- MERIT TIBBIE 3084L LOT 11 TJL 3084L - 2320682 - FEBRUARY 17 2023

BW +3.0

WW +58

YW +94

Milk +23

SIRE
VERMILION RERIDE F116
BELVIN MAY CITY 0136
BELVIN GEORGINA 121'17

DAM
MTC FORT WORTH 7169
DURALTA 7169 TIBBIE 21H
DURALTA 85W TIBBIE 189A

VERMILION RE-RIDE
VERMILION LUCY 5087
HF SYNDICATE 65B
BELVIN GEORGINA 45'15
S A V RENOWN 3439
S A V MADAME PRIDE 2407
REMINGTON MAGNIFY 85W
MVF TIBBIE 139U



3084

The Tibbie cows have been a cornerstone of

the breed across Canada for decades, this May City daughter is flat right. Correct in her angles, great footed and stamped with that ideal Angus head. Love the teat size and placement at this stage, this girl is set to mature into a productive momma cow. Bred early to Ambassador!

Breeding April 27th , Styles Ambassador D004, favourable due Feb 3rd. Exposed Styles Ambassador D004 May 28th – July 15th



3092

Straight Canadian!

Broody, big bodied and built right, Mia 3092 was a result of our acquisition of a package of cows from Ryan Caragata. Her dam, Mia 3013G, is a summer tour favourite. High volume, low input female that has a tremendous amount of breeding versatility. Bred to Cool 3028 and I tell ya what, we loved him at sale time but he matured into an absolute stud when we saw him during breeding season at 66 Ranch The breeding to the Cool 3028 bull is sure to excite!

Breeding May 18th Merit Cool 3028, favourable due February 24th. Exposed Styles Ambassador D004 May 28th – July 15th



Service Sire

-M- MERIT MIA 3092

LOT 12 TJL 3092L - 2319726 - FEBRUARY 20 2023

BW +2.3 WW +57 YW +94 Milk +23

SIRE
PEAK DOT FOR SURE 385F
PEAK DOT FOR SURE 3113J
PEAK DOT LADY 3027E

DAM
PEAK DOT FOOTHILLS 216E
PEAK DOT MIA 3019G
PEAK DOT MIA 904D

PEAK DOT FOR SURE
PEAK DOT LADY 674A
PEAK DOT ELIMINATOR 77C
LADY OF PEAK DOT 466N
PEAK DOT FOOTHILLS 1012B
BARBARA OF PEAK DOT 978X
PEAK DOT BULLET 749A
PEAK DOT MIA 906B

-M- MERIT POLLYANNA 3093L

LOT 13 TJL 3093L - 2319727 - FEBRUARY 20 2023

BW +1.9 WW +55 YW +93 Milk +26

SIRE
KR INCREDIBLE 8149
MERIT INCREDIBLE 1020J
MERIT FLORA 6078D

DAM
HF GRIZZLY 12T
U-2 POLLYANNA 172B
U-2 POLLYANNA 32M

PANTHER CR INCREDIBLE 6704
KR PRIDE 4031
BAR S RANGE BOSS 4002
MERIT FLORA 4120
HF KODIAK 5R
HF ECHO 52M
WHITESTONE WIDESPREAD MB
DOUBLE J POLLYANNA 53E



3093

What this girl lacks in ears she makes up

for with style. Another good looking, big hipped Incredible 1020 daughter that is sound from the ground up. Dam Pollyanna 172B raised Merit Attraction 3H that was a sale feature in 2021 and has done an outstanding job for our friends at Freyburn. Bred to Ambassador, this one could hit a home run!

Breeding May 15th Styles Ambassador D004, favourable due February 21st. Exposed Styles Ambassador D004 May 28th – July 15th



Dam



3097 The only opportunity at an Intent 37H daughter in Females of Merit. Blending two of our most prolific and potent cow families, Blacklass 3097 is bred for success. The Intent cattle are correct in their foot design and udder structure. Blacklass 3097's bred to Ambassador, expect easy calving a superior skeletal integrity.

Breeding Exposed Styles Ambassador D004 May 28th – July 15th. Due approximately April 7th.



Sire

-M- MERIT BLACKLASS 3097L **LOT 14** MSL 3097L - 2340859 - FEBRUARY 20 2023

BW **+2.0** WW **+53** YW **+84** Milk **+29**

SIRE	GDAR INSIGHT 7201
	MERIT INTENT 37H
	MERIT FLORA 6078D
DAM	BAR S RANGE BOSS 4002
	MERIT BLACKLASS 6066D
	MERIT BLACKLASS 3017

SITZ INSIGHT 4794
GDAR QUEEN CARY 3233
BAR S RANGE BOSS 4002
MERIT FLORA 4120
BAR S RANGE BOSS 1118
BAR S PRIDE 0073
MERIT 77X
MERIT BLACKLASS 9592

-M- MERIT SOCIALITE 3122L **LOT 15** TJL 3122L - 2319817 - MARCH 01 2023

BW **+2.9** WW **+54** YW **+92** Milk **+24**

SIRE	BAR S RANGE BOSS 4002
	MERIT MCLAREN 8020F
	MERIT BLACKLASS 6060D
DAM	MLG MOMENTOUS 6079
	MERIT SOCIALITE 18H
	MERIT SOCIALITE 48X

BAR S RANGE BOSS 1118
BAR S PRIDE 0073
MERIT STONEY CREEK 4023
MERIT BLACKLASS 1184
JL AUTHORITY 2098
MLG BLACKBIRD 10Z
GDAR INSIGHT 7201
MERIT SOCIALITE 4195



3122 One of the favourites at the ranch, Socialite 3122 is granddaughter of 48X, the cow that sparked the hype around the "Merit" cow 10 years ago. Tough to let this one go. She is a mile long, soft sided and easy travelling, stamped with that Socialite head that's angular and strong. Foot quality is second to none being a McLaren daughter, a real exciting opportunity here! Bred early to Investment! Big time cow, big time mating!

Breeding Merit Investment 1054 April 26th, favourable due February 2nd. Exposed Styles Ambassador D004 May 28th – July 15th



Granddam



3132 Big outlined, sound footed Pacesetter daughter that's built for the long haul. The Pride cow family has been a cornerstone of our program for four decades. The longevity, udder quality and big barrelled rib shape is a constant and show true with Pride 3132. Bred Ambassador to produce a true outcross.

Breeding Styles Ambassador D004, May 17th, favourable due February 23rd. Exposed Styles Ambassador D004 May 28th – July 15th

-M- MERIT PRIDE 3132L **LOT 16** TJL 3132L - 2319942 - MARCH 05 2023

BW **+0.4** WW **+58** YW **+105** Milk **+27**

SIRE
KR PACESETTER
EARLEY PACESETTER 2J
EARLEY MISS 40B

DAM
KR APOLLO 6458
MERIT PRIDE 8119F
MERIT PRIDE 5091

RBM STEP AHEAD C80
KR BLACKBIRD 4295
SITZ UPWARD 9309
EARLEY MISS NEW DEAL 9Z
KRAMERS APOLLO 317
KR MISS ANGUS 4309
MINBURN MAIN EVENT 82K
MERIT PRIDE 9010

-M- MERIT PRIDE 3137L **LOT 17** TJL 3137L - 2319947 - MARCH 08 2023

BW **+2.4** WW **+59** YW **+106** Milk **+25**

SIRE
KR PACESETTER
EARLEY PACESETTER 2J
EARLEY MISS 40B

DAM
MERIT RAGE 4031B
MERIT PRIDE 6124D
MERIT PRIDE 3031

RBM STEP AHEAD C80
KR BLACKBIRD 4295
SITZ UPWARD 9309
EARLEY MISS NEW DEAL 9Z
DAINES HEAVY SI 57Z
MERIT SOCIALITE 48X
MERIT MAVERICK 1117
MERIT PRIDE 4185



3137 Brood cow basics have stayed the same here for the last 4 decades, foot shape, udder design, maternal image and fertility are at the forefront of our breeding program. Pride 3137 is a bold sprung, comfortable travelling Pacesetter daughter who exemplifies those basics that make our world go round. Bred to Cool, a mating that was designed for balance, structural integrity and productivity.

Breeding May 17th Merit Cool 3028, favourable due February 23rd. Exposed Styles Ambassador D004 May 28th – July 15th



3144 One striking Socialite!
This sweet fronted, superb footed heifer is one of the best we have to offer. The rib shape, power and mass coupled with sleek features and ideal proportions make Socialite 3144 a donor cow candidate. Granddam 2099 has been designated Elite. A full brother to her dam was a past sale feature to Richmond Ranch. Her dam by Sting 9080 is a tidy uddered big outlined power cow. Really excited for the future of this one. Bred early to Cool for a really exciting blend of some of the very best cows on the ranch!

Breeding April 26th Merit Cool 3028, favourable due February 2nd. Exposed Styles Ambassador D004 May 28th – July 15th



3144

-M- **MERIT SOCIALITE 3144L** **-M-** **MERIT MAYFLOWER 3149L**
LOT 18 GML 3144L - 2320114 - MARCH 20 2023 **LOT 19** TJL 3149L - 2319973 - MARCH 30 2023

BW **+3.8** WW **+66** YW **+119** Milk **+23**

SIRE
KR PACESETTER
EARLEY PACESETTER 2J
EARLEY MISS 40B

DAM
MERIT STING 7047E
MERIT SOCIALITE 9080G
MERIT SOCIALITE 2099

RBM STEP AHEAD C80
KR BLACKBIRD 4295
SITZ UPWARD 9309
EARLEY MISS NEW DEAL 9Z
BAR S RANGE BOSS 4002
MERIT SOCIALITE 5121C
GDAR INSIGHT 7201
MERIT SOCIALITE 5084

BW **+2.2** WW **+56** YW **+97** Milk **+23**

SIRE
PM THUNDERSTRUCK 22'13
BLAIR'S THUNDERSTORM 807F
S A V MADAME PRIDE 0151

DAM
MERIT HIGH MARK 6030D
KARYS MAYFLOWER 31G
GERLEI MAYFLOWER 37C

HF THUNDERBIRD 146Y
MVF ROSEBUD 313U
S A V 004 DENSITY 4336
S A V MADAME PRIDE 0075
MERIT 77X
MERIT JILT 1097
STUART YOUNGMAN 37Y
GERLEI MAYFLOWER 10R



3149 Structurally so right in her angles and smooth in her lines Mayflower 3149 is a big middled flashy girl that struts with style. The foot shape from the Thunderstorm line and Mayflower 31G from the Kary's at Montmartre will ensure this girl will develop into a no nonsense momma cow. Bred to Cool, makes it tough to let this girl go.

Breeding May 17th Merit Cool 3028, favourable due February 23rd. Exposed Styles Ambassador D004 May 28th – July 15th



Dam of Thunderstorm



3156

The final bred heifer in the offering is just a peach, we love how soft and free she travels. Big bodied and loose spined she stays true to her stride and hits the dirt on some serious timber. Beauty little cow backed by a beauty of a cow. Quality breeding stock here. She's bred early to Cool!

Breeding April 26th Merit Cool 3028, favourable due February 2nd. Exposed Styles Ambassador D004 May 28th – July 15th

-M- MERIT ANNIE K 3156L
LOT 20 TJL 3156L - 2319989 - APRIL 08 2023

BW **+3.3** WW **+53** YW **+92** Milk **+34**

SIRE

PEAK DOT FOR SURE 385F
PEAK DOT FOR SURE 3113J
 PEAK DOT LADY 3027E

DAM

PEAK DOT ELIMINATOR 723A
PEAK DOT ANNIE K 174C
 ANNIE K OF PEAK DOT 116Y

PEAK DOT FOR SURE
 PEAK DOT LADY 674A
 PEAK DOT ELIMINATOR 77C
 LADY OF PEAK DOT 466N
 S A V ELIMINATOR 9105
 HEROINE OF PEAK DOT 962U
 PEAK DOT ENTOURAGE 3W
 ANNIE K OF PEAK DOT 911W



31st Annual
BULL *Sale*



MONDAY MARCH 31ST, 2025
Briercrest, SK



4007 FLORA ALERT! The only direct 6078 daughter up for grabs this fall, sired by the popular Big River bull who lit up sale reports last spring at Peak Dot and Greenwood. 4007 is stamped with the classic Flora skull, teat placement and size with an added shot of power being bold sprung and dense in her build. Flush brother's to 4007 are currently gaining excitement by the day. Future is bright for this one!



Sire



Dam

-M- MERIT FLORA 4007M **LOT 21** TJL 4007M - 2388775 - JANUARY 23 2024

BW **+3.3** WW **+73** YW **+120** Milk **+21**

SIRE
ELLINGSON THREE RIVERS 8062
ELLINGSON BIG RIVER 0052
EA BLACKCAP 4053

DAM
BAR S RANGE BOSS 4002
MERIT FLORA 6078D
MERIT FLORA 4120

ELLINGSON HOMESTEAD 6030
EA EMBLYNETTE 6279
KOU PAL ADVANCE 28
EA BLACKCAP 7915
BAR S RANGE BOSS 1118
BAR S PRIDE 0073
BAR-E-L IRON WILL 32Y
MERIT FLORA 4105

-M- MERIT IDELETTE 4017M **LOT 22** TJL 4017M - 2373634 - JANUARY 27 2024

BW **+2.4** WW **+55** YW **+97** Milk **+23**

SIRE
W SUNRISE EXECUTIVE LAW 507H
MERIT SHERIFF 2040K
MERIT BLACKCLASS 6060D

DAM
MERIT CHIEF 6059D
FLEMING 808 IDELETTE
FLEMING 648 IDELETTE

PM EXECUTIVE DECISION 5'17
HF TIBBIE 27D
MERIT STONEY CREEK 4023
MERIT BLACKCLASS 1184
BAR S RANGE BOSS 4002
MERIT PRIDE 8659
MAR CAPITALIST 474
FLEMING 107 IDELETTE



4017 First Sheriff daughter to be offered and boy are we proud of her. High quality feet, clean joints, stout from the ground up and attractive up front. Big barrelled and square moving Idelette is pretty enough to hang a halter on and packs enough power to land herself in the donor pen later in life. Her sire, Sheriff, excels at all the basics that keep us in the bull business, excellent feet, fertility, length, hair, and performance.



Sire



4022

Full sister to Cool
3028 out of G2's Flora

1004 donor! As pretty as they come while having plenty of natural shape and capacity. Flora 4022 is a near carbon copy of her dam, being elegant in her design yet striking in her features while still being naturally mellow in her rib cage and trucks around with a hip and hind leg that is sporty. Show this one or mate her to generate more high quality stock. This girl is flat good!



Full Brother



Dam

-M- MERIT FLORA 4022M
LOT 23 TJL 4022M - 2388654 - JANUARY 29 2024

BW **+0.3** WW **+56** YW **+105** Milk **+31**

SIRE
HF SYNDICATE 213Z
U-2 COALITION 206C
U2 ERELITE 109Z

DAM
KR INCREDIBLE 8149
MERIT FLORA 1004J
MERIT FLORA 6078D

CONNEALY CONSENSUS 7229
HF MISS BLACKCAP 27R
YOUNG DALE XCLUSIVE 25X
U-2 ERELITE 1X
PANTHER CR INCREDIBLE 6704
KR PRIDE 4031
BAR S RANGE BOSS 4002
MERIT FLORA 4120

-M- MERIT BLACKWILLOW 4035M
LOT 24 TJL 4035M - 2373641 - FEBRUARY 04 2024

BW **+1.8** WW **+67** YW **+109** Milk **+27**

SIRE
U-2 COALITION 206C
MERIT INVESTMENT 1054J
MERIT FLORA 6078D

DAM
BAR-H MINDBENDER 141D
RRAR BLACKWILLOW 9K
RRAR BLACKWILLOW 26C

HF SYNDICATE 213Z
U2 ERELITE 109Z
BAR S RANGE BOSS 4002
MERIT FLORA 4120
S SUMMIT 956
HF TIBBIE 93U
VISION UNANIMOUS 1418
RRAR BLACKWILLOW 8Y



4035

Investment daughter
that's big middled

and good looking. The Investment hype is no longer hype after last sale season. Having sons top sales across the country including the Preacher bull at Golden Oak, and a substantial set of sons at Duralta. We are awfully excited about utilising the daughters in our program.



Sire



4072

Big River daughter out of Investments full sister, Flora 1032. Huge potential here! We love the look she gives from the side being so smooth and pretty in her lines while being big barrelled and broody in her kind. The guess work is taken out on this one, bred for big things!



Maternal Sister to Dam



Dam

-M- **MERIT FLORA 4072M**
LOT 25 TJL 4072M - 2379995 - FEBRUARY 20 2024

BW **+0.7** WW **+67** YW **+113** Milk **+23**

SIRE
ELLINGSON THREE RIVERS 8062
ELLINGSON BIG RIVER 0052
EA BLACKCAP 4053

DAM
U-2 COALITION 206C
MERIT FLORA 1032J
MERIT FLORA 6078D

ELLINGSON HOMESTEAD 6030
EA EMBLYNETTE 6279
KOU PAL ADVANCE 28
EA BLACKCAP 7915
HF SYNDICATE 213Z
U2 ERELITE 109Z
BAR S RANGE BOSS 4002
MERIT FLORA 4120

-M- **MERIT SOCIALITE 4093M**
LOT 26 TJL 4093M - 2380318 - FEBRUARY 24 2024

BW **+4.5** WW **+75** YW **+122** Milk **+30**

SIRE
U-2 COALITION 206
MERIT INVESTMENT 1054J
MERIT FLORA 6078D

DAM
HF UNIT 14C
MERIT SOCIALITE 8192F
MERIT SOCIALITE 48X

HF SYNDICATE 213Z
U2 ERELITE 109Z
BAR S RANGE BOSS 4002
MERIT FLORA 4120
HF TIGER 5T
HF ROSEBUD 276Z
GDAR INSIGHT 7201
MERIT SOCIALITE 4195



4093

Pretty calf with power cow features. This Investment girl combines a lot of the best genetics we have propagated over the past 10 years. Dam Socialite 8192 is a maternal sister to Rage, Kingsman, Whiskey, Churchill, Socialite 9063, and Socialite 1028. Love the running gear on this sweetheart, she is so loose and flexible while being coordinated and powerful from all angles. Don't miss this one.



Granddam



Dams Maternal Sister



-M- MERIT SOCIALITE 1028J **LOT A**

TJL 1028J - 2229499 - FEBRUARY 04 2021

BW **+3.4** WW **+75** YW **+134** Milk **+39**

SIRE
HF SYNDICATE 213Z
U-2 COALITION 206C
U2 ERELITE 109Z

DAM
GDAR INSIGHT 7201
MERIT SOCIALITE 48X
MERIT SOCIALITE 4195

CONNEALY CONSENSUS 7229
HF MISS BLACKCAP 27R
YOUNG DALE XCLUSIVE 25X
U-2 ERELITE 1X
SITZ INSIGHT 4794
GDAR QUEEN CARY 3233
F A R KRUGERRAND 410H
MERIT SOCIALITE 1024

BUSHS AMPLIFY 984

IMP 984L - 2369424 **3 Embryos Exportable to NORTH AMERICA**

BW **+1.1** WW **+80** YW **+151** Milk **+32**

SIRE
BRUNS UPPERCUT 610
BRUNS TOP CUT 373
DAKOTA MISS 669 BAF

DAM
SYDGEN ENHANCE
BUSHS LADY ENHANCE 0612
BUSHS LADY DECISION 8540

Harley, as we call her, has been one of the most admired females we have ever raised. Her massive body and thickness coupled with a beautiful head and neck propelled her to dominate her contemporaries. She won a couple of big interbreed jackpots in the spring then went on to be the Grand Champion at Ag-Ex and Intermediate Champion Yearling at Agribition. She continues to impress in production, dropping a beautiful udder and raising a STUD of a Sheriff calf that we will look to utilise in our spring breeding program. This next generation Socialite donor is poised to take our program to the next level. With these embryos by our exciting Jr herdsire BUSHS AMPLIFY you can be part of the excitement.

Guaranteeing 1 90 day pregnancy if implanted by a certified technician.



Merit Socialite 1028J



Bushs Amplify 984



-M- MERIT FLORA 1032J **LOT B**

TJL 1032J - 2233545 - FEBRUARY 04 2021

BW **+2.1** WW **+54** YW **+92** Milk **+23**

SIRE
HF SYNDICATE 213Z
U-2 COALITION 206C
U2 ERELITE 109Z

DAM
BAR S RANGE BOSS 4002
MERIT FLORA 6078D
MERIT FLORA 4120

CONNEALY CONSENSUS 7229
HF MISS BLACKCAP 27R
YOUNG DALE XCLUSIVE 25X
U-2 ERELITE 1X
BAR S RANGE BOSS 1118
BAR S PRIDE 0073
BAR-E-L IRON WILL 32Y
MERIT FLORA 4105

MERIT SHERIFF 2040

TJL 2040K - 2279239 **3 Embryos Exportable to NORTH AMERICA**

BW **+2.6** WW **+59** YW **+107** Milk **+20**

SIRE
PM EXECUTIVE DECISION 517
W SUNRISE EXECUTIVE LAW 507H
HF TIBBIE 27D

DAM
MERIT STONEY CREEK 4023
MERIT BLACKCLASS 6060D
MERIT BLACKCLASS 1184

BALDRIDGE BADGER

IMP 438F - 2237367 **3 Embryos Exportable to NORTH AMERICA**

BW **+3.4** WW **+89** YW **+151** Milk **+17**

SIRE
MOGCK BULLSEYE
HOOVER NO DOUBT
MISS BLACKCAP ELLSTON J2

DAM
STYLES UPGRADE J59
BALDRIDGE ISABEL Y69
BALDRIDGE ISABEL T935

ELLINGSON BIG RIVER 0052

IMP 052H - 2214645 **3 Embryos Exportable to NORTH AMERICA**

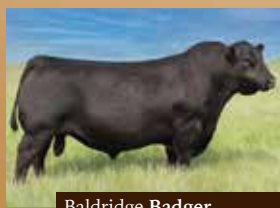
BW **+4.0** WW **+87** YW **+148** Milk **+23**

SIRE
ELLINGSON HOMESTEAD 6030
ELLINGSON THREE RIVERS 8062
EA EMBLYNETTE 6279

DAM
KOUPL ADVANCE 28
EA BLACKCAP 4053
EA BLACKCAP 7915

The only full sister to the \$85,000 Investment, Flora 1032 is leading the way as a next generation donor here at Merit. Her style, structural integrity and balance is second to none. Classic angus cow that consistently generates progeny that excel in terms of power, class and all calves are stamped with a correct build.

Guaranteeing 1 90 day pregnancy if implanted by a certified technician.



Baldridge Badger



Ellingson Big River 0052



Merit Sheriff 2040



-M- MERIT SOCIALITE 2056 **LOT C**

TJL 2056K - 2272817 - FEBRUARY 13 2022

BW **+4.8** WW **+47** YW **+86** Milk **+30**

SIRE
JL AUTHORITY 2098
MLG MOMENTOUS 6079
MLG BLACKBIRD 10Z

DAM
BAR S RANGE BOSS 4002
MERIT SOCIALITE 9063G
MERIT SOCIALITE 48X

S A V ELIMINATOR 9105
JL LADY 8026
JL PIONEER 0062
SOUTHLAND BLACKBIRD 172T
BAR S RANGE BOSS 1118
BAR S PRIDE 0073
GDAR INSIGHT 7201
MERIT SOCIALITE 4195

BALDRIDGE BADGER

IMP 438F - 2237367 **3 Embryos Exportable to NORTH AMERICA**

BW **+3.4** WW **+89** YW **+151** Milk **+17**

SIRE
MOGCK BULLSEYE
HOOVER NO DOUBT
MISS BLACKCAP ELLSTON J2

DAM
STYLES UPGRADE J59
BALDRIDGE ISABEL Y69
BALDRIDGE ISABEL T935

MERIT INVESTMENT 1054

TJL 1054J - 2233546 **3 Embryos Exportable to NORTH AMERICA**

BW **+2.9** WW **+64** YW **+99** Milk **+26**

SIRE
HF SYNDICATE 213Z
U-2 COALITION 206C
U2 ERELITE 109Z

DAM
BAR S RANGE BOSS 4002
MERIT FLORA 6078D
MERIT FLORA 4120

All the special cows around here get names and "Pam" is one that gets us more excited every day! Kicking off her show year by winning the Angus show in Brandon and then being crowned Supreme Champion Female was truly special. Admired for her ideal proportions, sharp look up front and unmatched dimension from every angle she strides with ease. Complimenting her

maternal look from the side is an ideal udder in terms of volume, suspension, fore udder extension, teat placement and size. We are anxiously awaiting the story Pam will write for us!

Guaranteeing 1 90 day pregnancy if implanted by a certified technician.



Baldridge Badger



Merit Investment 1054



Merit Kingsman 8030 - Full brother to 9063G

-M- MERIT SOCIALITE 9036G **LOT D**

TJL 9036G - 2134685 - FEBRUARY 12 2019

BW **+2.1** WW **+46** YW **+77** Milk **+31**

SIRE
B C LOOKOUT 7024
BAR S RANGE BOSS 1118
VBAR S PRIDE 7808

DAM
GDAR INSIGHT 7201
MERIT SOCIALITE 48X
MERIT SOCIALITE 4195

B C LOOKOUT 7024
BAR S PRIDE 7808
PLAINVIEW LUTTON E102
BAR S PRIDE 8594
SITZ INSIGHT 4794
GDAR QUEEN CARY 3233
F A R KRUGERRAND 410H
MERIT SOCIALITE 1024

LAFINS MARVEL 1801

IMP 1801F - 2239907 **3 Embryos Exportable to NORTH AMERICA & AUS**

BW **+2.6** WW **+63** YW **+113** Milk **+14**

SIRE
S A V BRILLIANCE 8077
PVF INSIGHT 0129
PVF MISSIE 790

DAM
EXAR CONSENSUS 1972B
LAFINS GALAXIE 3332
LAFINS GALAXIE 1241

The flush sister to Whiskey 8010 (herdsire for Blairswest and Blairs, ag) and Kingsman (herdsire for Pedersen and McNabb) Socialite 9063 has cranked it out of the park for us producing 2 feature bulls in the 2023 bull sale Driver 2048K and Monumental 2075K and now producing Socialite 2056K. Here's a great opportunity to write your own Socialite story

Guaranteeing 1 90 day pregnancy if implanted by a certified technician.



Merit Whiskey 8010
Full Brother to 9063G



Laflins Marvel 1801



-M- MERIT LADY ANN 7076E **LOT E**

TJL 7076E - 1990095 - FEBRUARY 12 2017

BW **+3.9** WW **+52** YW **+89** Milk **+29**

SIRE
HF TIGER 5T
HF UNIT 14C
HF ROSEBUD 276Z

DAM
DWAJO DUTCH 65P
MERIT LADY ANN 7158
MERIT LADY ANN 3229

HF KODIAK 5R
HF ECHO 84R
CARRUTHERS NET WORTH 53U
HF ROSEBUD 68X
GDAR DUTCH 1508
DWAJO QUEEN GEM 43J
MINBURN MAIN EVENT 82K
MERIT LADY ANN 117K

S A V MAGNUM 1335

IMP 1335J - 2299261 **3 OR 6 Embryos Exportable to NORTH AMERICA**

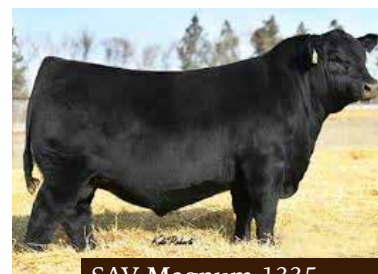
BW **-0.3** WW **+90** YW **+167** Milk **+37**

SIRE
K C F BENNETT SOUTHSIDE
MEAD MAGNITUDE
MEAD PRIMROSE N198

DAM
LD CAPITALIST 316
S A V EMBLYNETTE 9023
S A V EMBLYNETTE 7505

7076 found her route to the donor pen the old fashioned way. Her production record is impeccable. Lady Ann 7076 boasts a weaning ratio of 110 on her first 5 calves. Her first calf by KR Apollo, Merit Armstrong was our second high selling bull in 2020 to Ken Harle's Willowview Angus. Her second was a Sting daughter that was our second high selling heifer calf in 2020. She went on to have a very successful show career for Leah Libke. Her next two daughters rose to the top of their respective crops and have been retained at Merit, while 3109 was a feature in last years sale. In addition to an impressive production record, 7076 is phenotypically appealing and correct being feminine, broody and big hiped, while standing on an exceptional hoof. The Magnum progeny at S A V have checked all the boxes proving to be heifer safe while being the heaviest sire group at weaning and yearling last year.

Guaranteeing 1 90 day pregnancy if implanted by a certified technician or 2 if buyer takes all 6 embryos.



SAV Magnum 1335

-M- PEAK DOT HEATHER 392C **LOT F**

PDAR 392C - 1881826 - MARCH 26 2015

BW **+3.8** WW **+64** YW **+103** Milk **+30**

SIRE
BARSTOW CASH
KR CASH FLOW
WK LASS 1591

DAM
S A V 004 PREDOMINANT 4438
HEATHER OF PEAK DOT 924U
HEATHER OF PEAK DOT 544K

SITZ DASH 10277
BARSTOW QUEEN W16
WK RETURN
VERMILION LASS 0029
S A V 8180 TRAVELER 004
S A V EMBLYNETTE 1182
DOUBLE AA RITO 287'97
HEATHER OF PEAK DOT 460D

BALDRIDGE BADGER

IMP 438F - 2237367 **3 Embryos Exportable to NORTH AMERICA**

BW **+3.4** WW **+89** YW **+151** Milk **+17**

SIRE
MOGCK BULLSEYE
HOOVER NO DOUBT
MISS BLACKCAP ELLSTON J2

DAM
STYLES UPGRADE J59
BALDRIDGE ISABEL Y69
BALDRIDGE ISABEL T935

COLEMAN TRIUMPH 9145

IMP 9145G - 2240755 **3 Embryos Exportable to NORTH AMERICA**

BW **-0.3** WW **+66** YW **+118** Milk **+20**

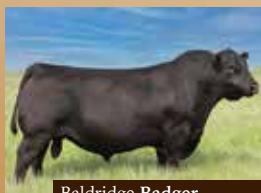
SIRE
COLEMAN CHARLO 0256
COLEMAN BRAVO 6313
COLEMAN DONNA 714

DAM
S A V RENOWN 3439
LAWSON'S CHLOE C815
LAWSON'S CHLOE Z341



One of the most powerful Angus cows in the breed. Revered for her impeccable foot structure, substance, muscle dimension and overwhelming volume, and mated to two of the hottest bulls on the continent. This fall Dad toured SAV and was blown away by the consistent quality in design and dense build of the Badger progeny. Triumph is a highly proven calving ease and maternal sire combining Bravo and Chloe C815. Designated Premier by the CAA, Heather 392 is playing a big role in the expansion of our ET program and we couldn't be more excited for these matings and to build with her.

Guaranteeing 1 90 day pregnancy if implanted by a certified technician.



Baldrige Badger



Coleman Triumph 9145



-M- MERIT BLACKLASS 6060D **LOT G** MSL 6060D - 1926034 - FEBRUARY 14 2016

BW **+2.7** WW **+52** YW **+86** Milk **+29**

SIRE	HF PROWLER 43U MERIT STONEY CREEK 4023 MERIT PRIDE 2010	HF KODIAK 5R HF ROSEBUD 98P GDAR INSIGHT 7201 MERIT PRIDE 8659 GEIS MAXIMUM 80'01 CRESCENT CREEK ROSEBUD 155M MINBURN MAIN EVENT 82K MERIT BLACKLASS 1165
	BEVERLY HILLS VISA 734 MERIT BLACKLASS 1184 MERIT BLACKLASS 5195	
DAM		

MERIT FRONT-RUNNER 3150

TJL 3150L - 2319986 **3 Embryos Exportable to NORTH AMERICA**
BW **+2.4** WW **+69** YW **+119** Milk **+27**

SIRE	KR PACESETTER EARLEY PACESETTER 2J EARLEY MISS 40B	GDAR INSIGHT 7201 MERIT FLORA 12H MERIT FLORA 6078D
DAM		



Merit Front-Runner 3150L

Along with being the dam of our Lot 1 heifer, Blacklass 6060 has been THE Herdbull maker, the dam of McLaren, the \$28,500 herdsire for Duralta and South View Ranch, the \$62,500 Kingpin to the 66 Ranch, the \$47,000 Sheriff to Bronyx and the \$40,000 Admiral bull to 66 Ranch. Blacklass 6060 has earned Elite dam status. She's a powerful female that stands on a perfect foot. 6060 continues to be a mainstay of our donor arsenal, consistently transmitting elite level performance, structural integrity, and fleshing ability.

Guaranteeing 1 90 day pregnancy if implanted by a certified technician.

Herd Health

BRED HEIFERS

Prior to breeding, Vista Once SQ & a magnet August 22nd preg check, Vira Shield 6, Scour Boss 4 & Safe Guard. A Scour Boss 9 booster will be needed late December or early January.

HEIFER CALVES

Vaccinated & boosted with Vista Once SQ & Vision 7 Somnus. Weaned September 22nd.



REFERENCE

Sires



—M— RS **STYLES AMBASSADOR D004** IMP 004L - 2369425 - FEBRUARY 02 2023

CE +13.0 MCE +16.0 BW -1.0 WW +80 YW +137 Milk +33

SIRE
MOHNEN PRINCE 2959
MOHNEN AMBASSADOR
MOHNEN JILT 749

DAM
MUSGRAVE JUMBO
STYLES LASSIE B007
STYLES LASSIE Z24

CONNEALY CONFIDENCE PLUS
MOHNEN ABIGALE 1170
MOHNEN SUCCESS 187
MOHNEN JILT 1395
MUSGRAVE 316 COLOSSAL 137
MUSGRAVE MO BARBARA 947
BUSHES DATE NIGHT62
STYLES LASSIE X105

D004 came to us as the Lot 1 and the high selling bull in the 2024 Styles Angus production sale. D004 was exceptionally correct in his structure, tremendously fluid in his movement. Ambassador should be a bomb proof heifer bull with a +13 ced and a -1.0 bw epd all while ranking in the top 2% for ww & YW, top 1% for docility, maternal calving ease and milk. His two-year old dam is a herd favourite by the highly sought after Musgrave Jumbo. We unfortunately lost Ambassador after breeding so his influence will be limited.



Merit **COOL** 3028



Merit **FRONT-RUNNER** 3150



SAV MAGNUM 1335



Merit **INVESTMENT** 1054



Merit **SYNERGY** 3038



HF REVERENCE 23K



Merit **SHERIFF** 2040



-MERIT

JUNIOR HEIFER

Incentive Program

We love how junior shows teach kids work ethic and responsibility, build character, and provide an opportunity to create life long friendships. We know that showing cattle takes a big commitment so we want to reward juniors who purchase and exhibit Merit females. If you show your Merit female at a designated provincial or national Angus junior show you will receive **\$100**. Just send us a backdrop photo from that show. If she wins a division, we'll make it **\$200**; Reserve Grand Champion **\$300**, and Grand Champion **\$500**. In addition, each exhibitor will receive a matching credit in our 2025 sale.



TERMS & CONDITIONS

TERMS: The terms of the sale are cash or cheque payable at par at the sale unless satisfactory credit arrangements have been made previous to the sale. The right of property shall not pass until after settlement is made. All settlements must be made with the clerks of the sale before any cattle will be released. The auctioneer shall have the right to refuse bids from anyone who has a previous record of default in payment or who has not made proper credit clearance to the sale with the owner or Sales Manager.

BIDDING: Each animal is to be sold to the highest bidder. No by-bidding will be permitted. A reasonable price base may be set.

DISPUTES: In case of disputes, bidding will be reopened between the parties involved. If no further bid is made, the buyer will be the person from whom the auctioneer accepted the last bid. The auctioneer's decision in such matters is final.

PURCHASER'S RISK: Each animal becomes the risk of the purchaser as soon as sold. Animals will be cared for at the purchaser's risk for a reasonable length of time.

ANNOUNCEMENTS: Errors discovered in the catalogue will be corrected by announcements from the auction stand at sale time and such corrections will take precedence over the printed matter in the catalogue. Buyers are cautioned to pay close attention to announcements.

CERTIFICATE OF REGISTRY: Each animal will carry papers issued by the Canadian Angus Association. A certificate of registry duly transferred will be furnished to the buyers for each animal after settlement has been made.

BREEDERS GUARANTEE, FEMALES: All cows have raised a calf and they and all yearling heifers have been pregnancy examined and confirmed safe in calf by a qualified veterinarian. They sell with no further fertility guarantee. All calendar year heifer calves are guaranteed open at time of the sale. Any animal that has not proven itself a breeder within 9 months after the date of the sale, if, in healthy condition, may be returned to the seller at the buyer's expense. The seller reserves the privilege of trying for a period of six months to prove the animal a

breeder. The seller, at his option, may either provide a credit to the buyer or replace the animal with another of equal value in full settlement and satisfaction of ALL claims. Any complaints regarding fertility of any animal in this sale shall be directed to the Contributor. All complaints regarding breeding difficulties must be reported in writing by the buyer to the seller within the time specified above and any animal returned must be free from disease and in good health. Any calendar year heifer calf shown and/or flushed by the by the purchaser is no longer a guaranteed breeder under this paragraph.

SETTLEMENT: Transportation charges on animals returned to the seller are for account of the purchaser. No incidental expenses such as feed, care, A.I., signing fees, interest, veterinary charges, etc., will be charged by either party when making settlement. If the seller is successful in proving the animal in question to be a breeder, the said animal will be reclaimed by the purchaser at his expense. Should the seller fail to prove the animal a breeder, then the buyer is guaranteed a satisfactory replacement F.O.B. ranch or a credit of the the actual price. Should a dispute arise over the quality of the replacement animal, the Sale Management will appoint a mediator.

ACCIDENTS: Although every precaution will be taken to protect the safety and comfort of buyers, neither the sales manager, auctioneer, or sellers assume any responsibility in this matter and disclaim any liability, legal or otherwise, in the event of accident or loss of property.

MAIL OR TELEPHONE BIDS: Bidders unable to attend the sale may phone or mail their bids and instructions to the sale manager, auctioneer, or special representatives. Bids must be received in sufficient time prior to the sale.

RIGHTS AND OBLIGATIONS: MERIT RESERVES THE RIGHT TO ONE SUCCESSFUL FUTURE FLUSH, MIN 6 EMBRYOS ON ALL FEMALES IN SALE. The above terms and conditions of the sale shall continue a contract between the buyer and the seller and be equally binding to both. Resale of animals following purchase in this sale shall constitute a separate transaction which is not covered by the terms and conditions of this sale.



RETURN UNDELIVERABLE MAIL TO

Box 768

Radville, SK

S0C 2G0



**FEMALES OF
-MERIT**